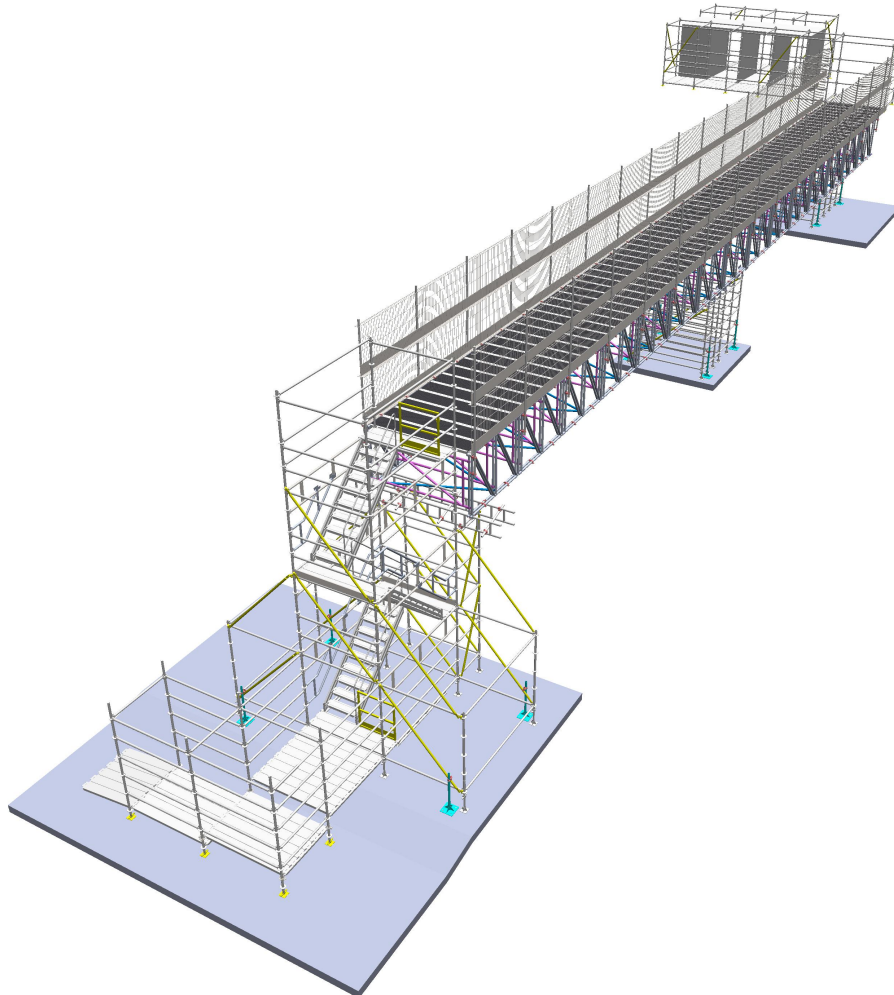


LONG-SPAN PEDESTRIAN BRIDGE (LSPB)

➤ PROJECT EXAMPLE

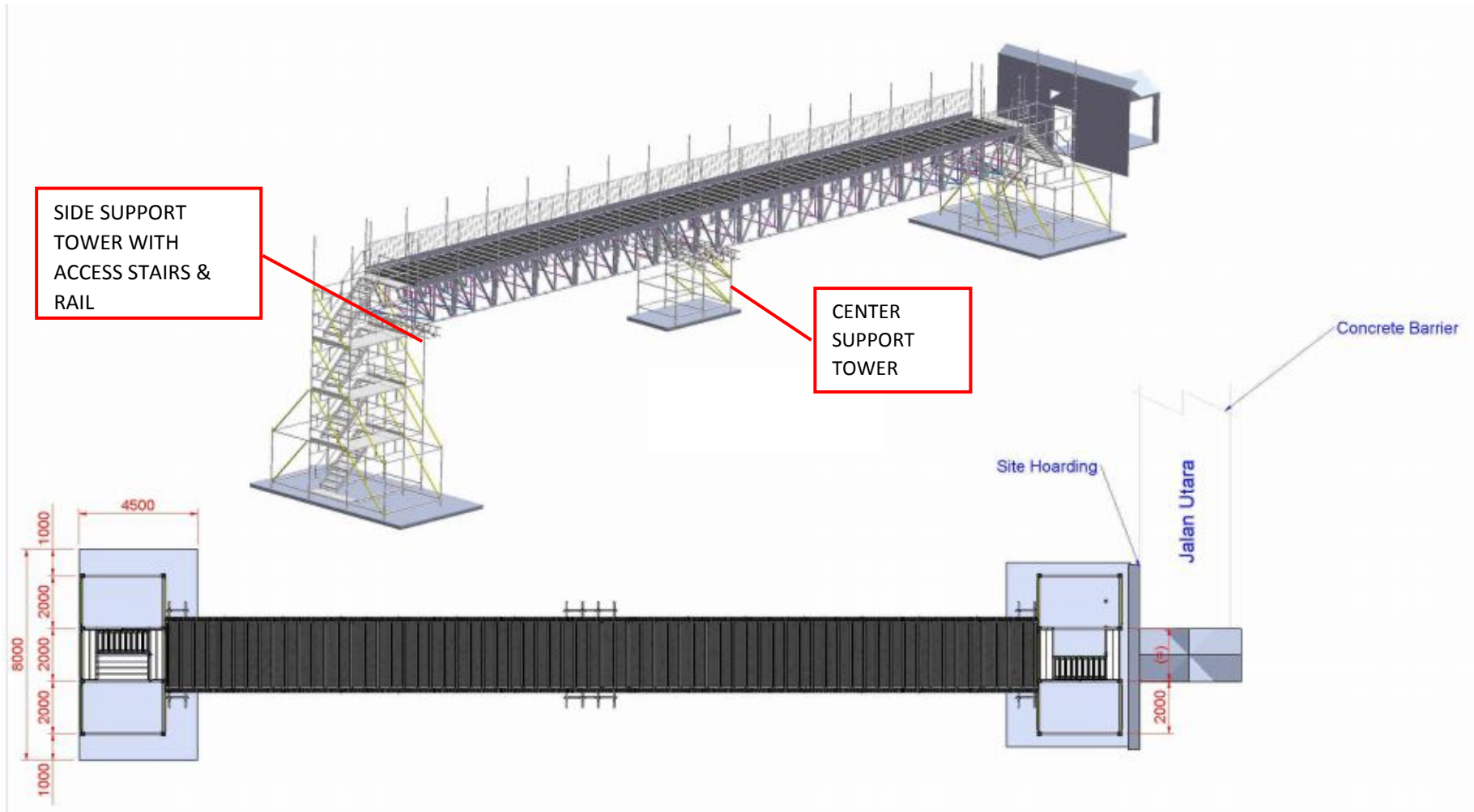


PROJECT SPECIFICATIONS:

BRIDGE HEIGHT CLEARANCE:	6.6 m
CLEAR SPAN:	33.15 m
DECKING WIDTH:	2.5 m
OVERALL SIZE:	9.5 m (L) x 2.5 m (W) X 10 m (H)
STAIR TOWER DIMENSION:	3 m x 2 m
DECK OPTIONS:	
ALUMINIUM DECK	SIZE 0.50m x 2.5m (DXS-Deck 2500)
STEEL DECK	SIZE 0.23m x 2.5m (DE-000-DS3DL)

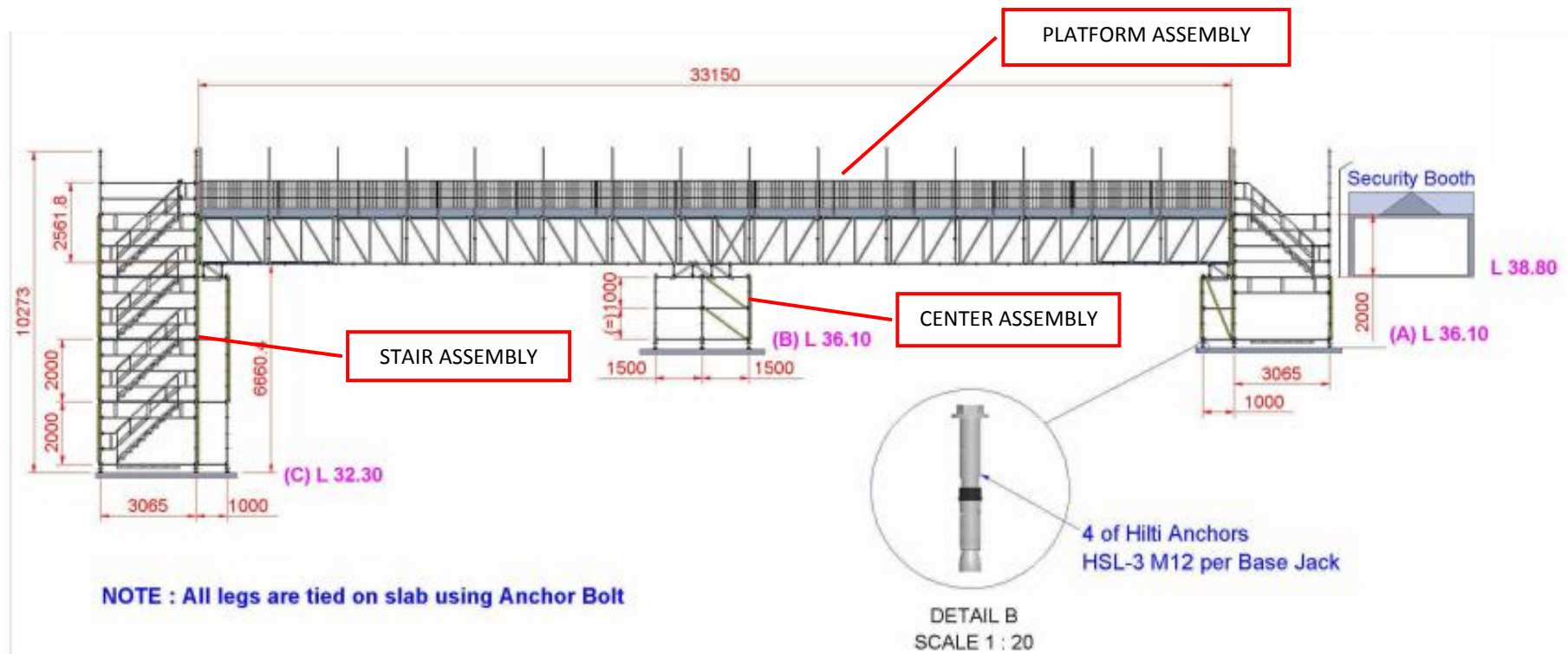
(*Other size are possible upon request)

LONG-SPAN PEDESTRIAN BRIDGE (LSPB) 16m -33 m SPAN



LONG- SPAN PEDESTRIAN BRIDGE (LSPB)-CONT'D

16m -33 m SPAN

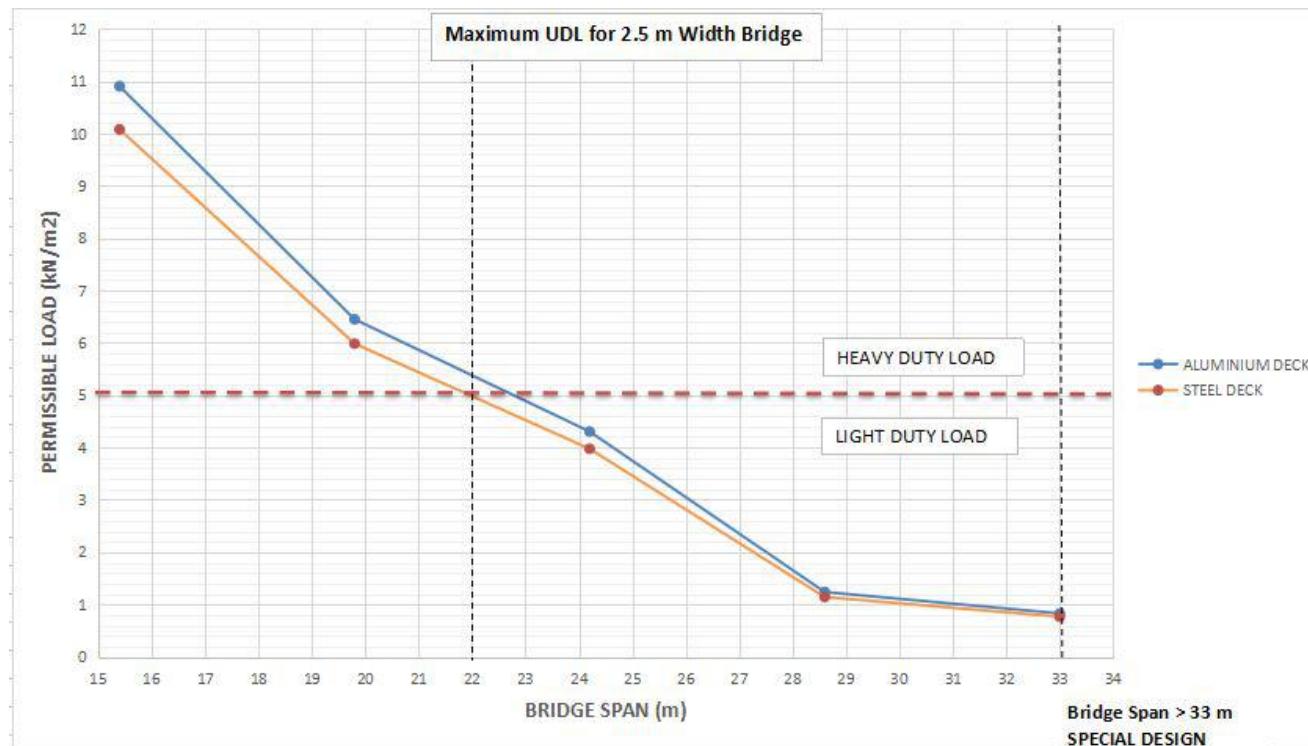


LOAD SPECIFICATIONS: PERMISSIBLE LOAD AGAINST VARIATION OF BRIDGE SPAN (LSPB)

Permissible load on the platform varies according to bridge span. Heavy duty load ($> 5\text{kN/m}^2$) applies for length less than 22 m and the Light duty load ($< 5\text{kN/m}^2$) applies for length more than 22 m.

ALUMINIUM DECK (width x length) : 0.50m x 2.5m (DXS-Deck 2500)

STEEL DECK (width x length) : 0.23m x 2.5m (DE-000-DS3DL)



Notes:

*Bridge span indicate the length from centre to centre of support column/tower.

*If span length requested is more than 33m, then special design is required.

*Based on BS6399 : General duty walkways-(regular two way pedestrian traffic)- 5.0kN/m^2